

CONNECT. | 20

Summer | 17

Your guide to

Small Groups Ministries Classes

and everything else you need to know
about Faith Family Church.

Dear Church Family:

As our church grows larger, we believe it is vitally important to grow smaller at the same time. This happens when members link to one another in healthy, growing friendships. The best way to develop these relational connections is by joining a class, serving in a ministry or participating in a small group.

We encourage you to look through the various types of ministries and groups available. Find one that you think fits your interests or that meets a particular need in this season of your life and then try it! There are some wonderful connections to be made in this church - relationships that will help you grow personally and that will help us grow into the connected body of believers that God desires us to be.

Sincerely,

Rick & Marjie Hyfton

Table of Contents.

General Information

Office Hours	4
Service Times	4
Pastoral Care	4
Our Story	5
What We Believe	6
Campus Maps	7

Classes

Baptism	10
The Journey Membership	10
Small Group Leader Orientation	10

Ministries

Adult	11
Children	12
Guest Services	13
Media	16
Military	17
Outreach	18
Prayer	19
Worship Arts	19
Young Adult	20
Youth	20

Small Groups

Overview	21
Thinking About Being a Small Group Leader	21
FAQs	21
Activity Groups & Special Interest	23
Discussion Groups	25
Life Coaching Groups	27
Prayer Groups	28

General Information.

Office Hours

Tuesday - Friday | 8:30a - 5:00p

Service Times

Sunday | 9:00 & 11:00a

Children's Ministry [Birth - Grade 5]

Activ8 [Grades 6 - 8]

Sunday | 6:00p

Fusion [Classes and Small Groups]

Nursery [Birth - 24 months]

Awana Clubs [2 years - Grade 8]

Note: Sunday evening activities run August - April.

Be sure to check the website for current schedule.

Thursday | 7:00p

Elev8 [Grades 9 - 12]

Pastoral Care.

Baby Dedications

Baby Dedication is an opportunity to thank God for the precious gift of your child. Dedication is also an opportunity to publicly declare your intentions to raise your child in a Christian home. Not only are you dedicating your child to God, but you are also dedicating yourselves as parents to Christ and the church. Babies are dedicated at Faith Family Church on the first Sunday of odd-numbered months. Call the church office at 618.277.0232 or email us at childrensministry@faithfamilyshiloh.org.

Pre-Marriage & Weddings

We invest in marriages by providing outstanding resources and pre-marriage counseling to our members who are considering marriage. We encourage couples to start this process one year prior to the planned wedding date. If you are engaged or plan to get engaged please pick up a brochure at the information center or call our office at 618.277.0232. Please note that at least one individual must be a participating member of FFC and attending regularly for at least six months.

Funerals

The Lord brings comfort to us in our times of mourning, sorrow and loneliness. When we are separated from a loved one by death, we can turn to Him for comfort and healing. The heart of our pastoral staff is to bring comfort at this difficult time as we assist in funerals for Faith Family Church members and their immediate family members. Please contact us at 618.277.0232.

Emergency Prayer

Prayer changes things. If you have an emergency prayer need call 618.277.0232. During off hours, leave a short message explaining your situation. Prayer for your need will be initiated by our prayer teams in a timely manner.

Our Story.

In November 1992, Pastors Rick and Marjie Hufton started Faith Family Church in a rented room at the Ramada Inn in Fairview Heights with approximately 60 people.

In 2000, Faith Family bought 34 acres on Green Mount Road and moved into the new building four years later. We are grateful for the land God provided, and the growth we've experienced as He continues to fulfill His purpose for this church and our lives.

Since then, we have grown as hundreds of people have come to Christ and plugged into our vision to reach out to help people, serve the church and our community, and grow in our relationships with God and each other.

TIMELINE

As we look to the future, it is also good to look back at God's faithfulness:

- 1992 Services start at the Ramada Inn with 60 people.
- 1993 We move to a more permanent location at 4 Emerald Terrace.
- 1995 As the church grew, a move to 3 Emerald Terrace was needed.
- 2000 Purchased land on Green Mount Road. Church family is now at 450.
- 2003 Ground-Breaking ceremony – church family grows to 650.
- 2004 Moving! Services and ministries move into the new facility.
- 2007 Ground-breaking ceremony for new Educational Building.
- 2009 Grand Opening of Kidz Town, Educational Building and the Zone.
- 2010 Expansion of our auditorium is completed. Seating capacity is now 1000.
- 2011 Foyers are expanded.
- 2013 20-Year Anniversary Celebration.

What We Believe.

At Faith Family Church, we believe in the same biblical truths that have been held sacred since the time of Christ. We affirm truths that are unchangeable, yet fresh and applicable for each new generation. Here are the basics we hold dear.

ABOUT GOD

There is one God, the Creator of all things, who is infinitely perfect and eternally existent in three persons: Father, Son and Holy Spirit.

ABOUT JESUS CHRIST

Jesus Christ is the true God and true Man. He was conceived of the Holy Spirit and born of the Virgin Mary. He lived a sinless life and died on the cross as a sacrifice for the sins of all men. He arose bodily from the dead, ascended into heaven, and is now at the right hand of the Father as our High Priest and Advocate.

ABOUT THE HOLY SPIRIT

The present, supernatural ministry of the Holy Spirit is to glorify the Lord Jesus Christ. During this age He indwells, guides, instructs, and empowers the believer for godly living and service. Every believer can receive a fresh infilling of the Holy Spirit with speaking in a spiritual language as physical evidence.

ABOUT THE BIBLE

The Old and New Testaments are the inspired, infallible and authoritative Word of God. In the Bible, we find the revelation of God's will for the salvation of men and the divine and final authority for Christian life.

ABOUT HUMANITY AND SALVATION

Man was created in the image of God but fell into sin and is, therefore, lost. Only through regeneration by the Holy Spirit can salvation and spiritual life be obtained. The shed blood of Jesus Christ and His resurrection provide the only grounds for justification and salvation.

ABOUT THE CHURCH

The true church is composed of all those who are born again. Through this new birth we are united together in the body of Christ. Jesus Christ is the Lord and head of the church. Every local church has the right under Christ to decide and govern its own affairs.

ABOUT BAPTISM AND COMMUNION

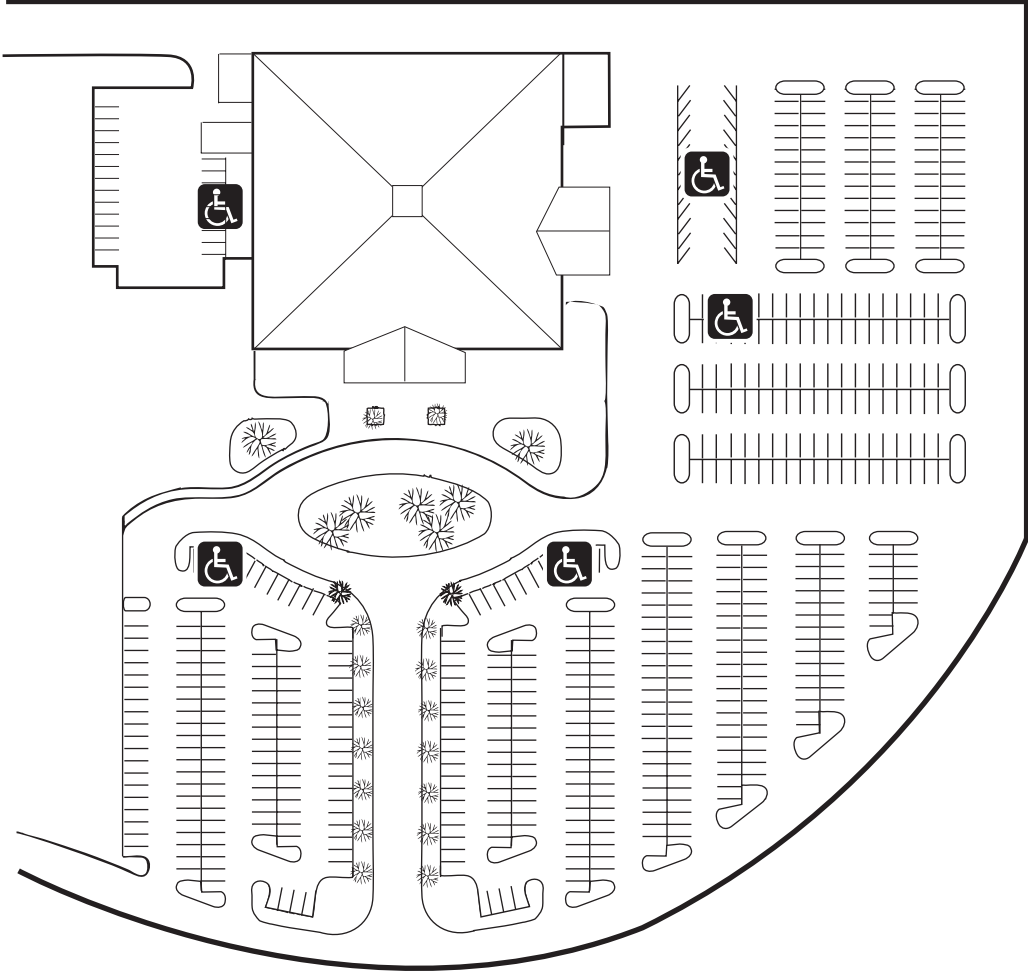
Water Baptism and the Lord's Supper are ordinances to be observed by the church during the present age; however, they are not to be regarded as a means of salvation.

ABOUT ETERNITY

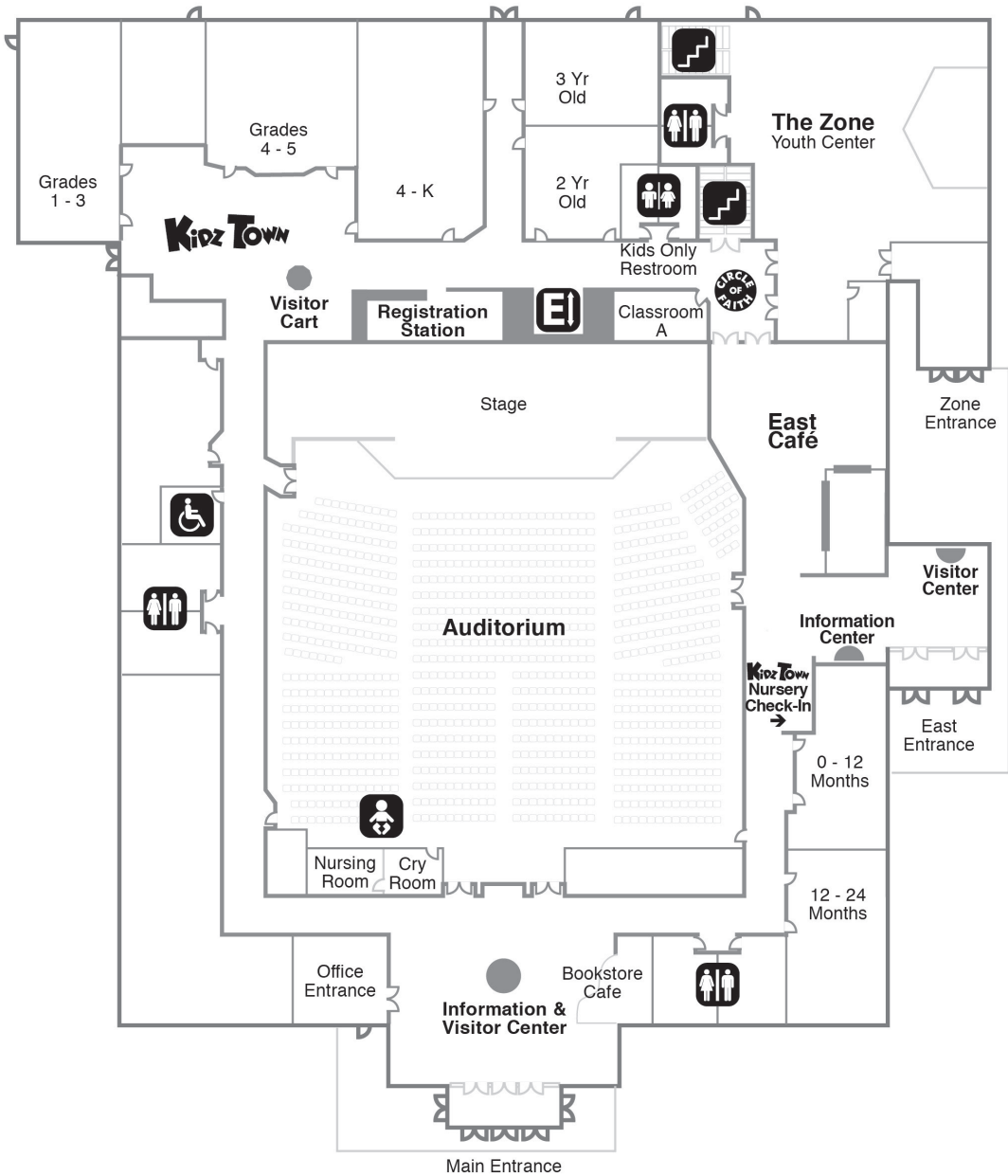
There will be a bodily resurrection of the dead; of the believer to everlasting joy with the Lord and of the unbeliever to judgment and everlasting conscious punishment.

Campus Maps.

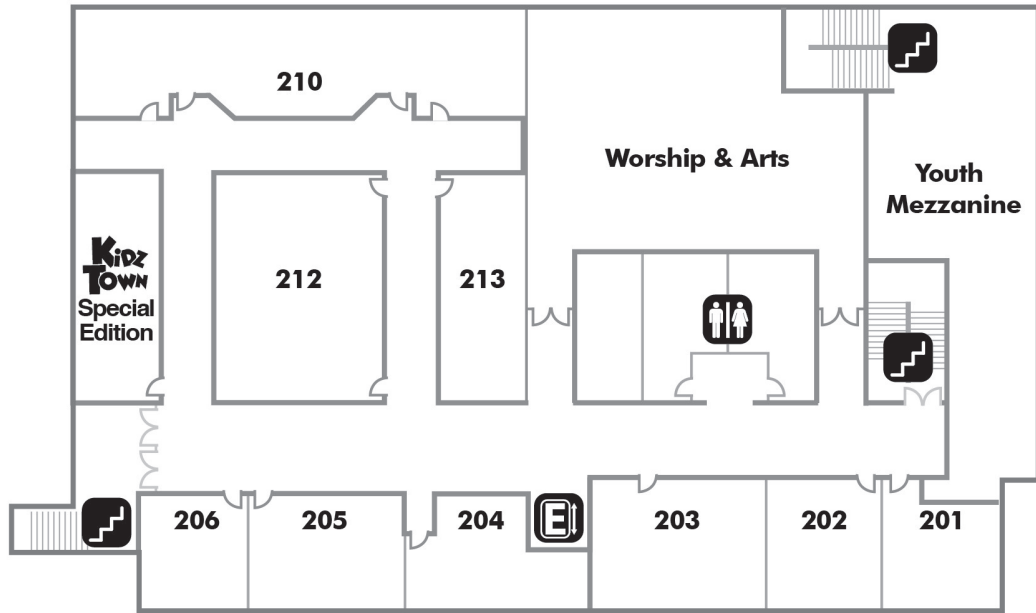
Parking



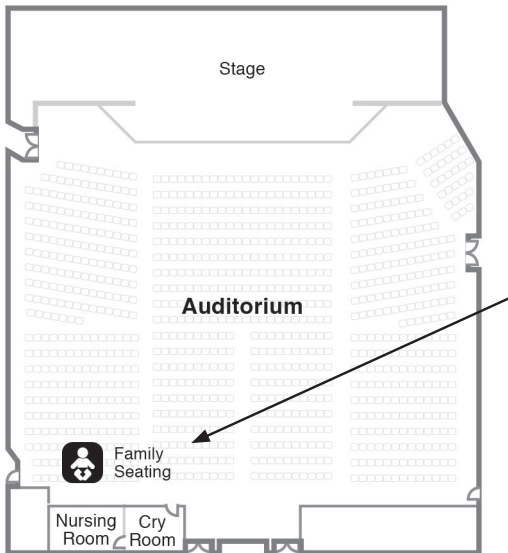
Main Building



Second Floor Educational Building



Reserved Seating for Families



FAMILY SEATING

For your convenience, seating for families with infants is located in the back of the auditorium near the Cry Room. The Cry Room is available for parents with babies up to 12 months old. You can find the Nursing Mothers room once you've entered the Cry Room. Due to the size of the room we ask that only one parent stay in the room with the distressed, vocal or active child.

Classes.

Water Baptism

Though water baptism is not necessary for salvation, it is a very special moment to publicly commit to Jesus. Water baptisms are part of our Sunday morning service the first Sunday of even-numbered months. Before being baptized you must attend our single-session class. This class helps answer any remaining questions you may have before you take this exciting step. Children must be in at least Grade 6 to be baptized. Enroll today at: faithfamilyshiloh.org/baptism.

CLASSES | 11:00a - 12:00p | Room 203

Sunday | 07/30

Sunday | 09/24

BAPTISMS

Sunday | 08/06

Sunday | 10/01

The Journey Membership Class

If you would like to become a member or simply learn more about FFC, please take our Journey Class. During this class, you'll hear about where we've come from and how you can connect at Faith Family. You will also learn more about God's plan for your life, the importance of community, spiritual maturity and serving with your gifts. Enroll today at: faithfamilyshiloh.org/journey.

SUNDAY CLASSES | 2:00 - 5:00p | Room 210

Class 101 & 102 | 07/16

Class 103 & 104 | 07/23

SUNDAY CLASSES | 11:00 - 12:30p | Room 212

Class 101 | 08/06

Class 102 | 08/13

Class 103 | 08/20

Class 104 | 08/27

Small Group Leader Orientation

If you are interested in exploring the role of a small group leader, this class is for you. You will receive training and an understanding of what small group leadership is all about. This orientation does not obligate or completely qualify you to lead. However, you will be given the opportunity to formally apply for leadership at this time. Enroll today at: faithfamilyshiloh.org/SGLO.

Sunday | 08/13 | 11:00a – 12:30p | Room 203

Sunday | 11/12 | 11:00a – 12:30p | Room 203

As a prerequisite to attending the Small Group Leader Orientation, you must have completed or be committed to completing our membership process.

Ministries.

Adult Ministry

MEN'S MINISTRY | Men of Faith

Improve the quality of your life, be spiritually challenged and build friendships. This is a ministry for men ages 14 and up. We plan special events throughout the year which include a powerful message, passionate worship, and food. You can also join a Men of Faith small group. Don't miss out on what God is doing in the lives of men at Faith Family Church.

For all inquiries, please contact:

Mark Burgdorf

618.580.4136

menoffaith@faithfamilyshiloh.org

SINGLES MINISTRY | Singles Soaring in Christ

1 Thessalonians 5:11 says, "Therefore encourage one another and build one another up, just as you are doing." That's what this adult singles ministry is all about. Being single doesn't mean being alone. No matter what your age, or whether or not you have children, we invite you to join us each month for group activities, friendship, food, and fun. Children are welcome.

For all inquiries, please contact:

Rick Bevers

618.628.2446

ffcsingles@gmail.com

Theresa Beamon

618.550.2417

beamon_21@yahoo.com

VIPs | 40 & Up

Expect to have a good time of fellowship each month with a potluck dinner, music, testimonies and more. Our purpose is to build one another up and share life-in-Christ lessons with others. Come along on day trips and activities to various destinations. We would also love for you join us on our annual bus trip.

For all inquiries, please contact:

Kent & Debbie Ohlendorf

618.709.2917 or 618.709.2921

kohlendorf@charter.net or dohlendorf@charter.net

WOMEN'S MINISTRY | It's a Girl Thing

We have so many lovely ladies in this church. The different backgrounds represented here make this a rich community of women. As you know, every age has its joys and challenges. Together we embrace every season of life, cheering each other on. Girl Thing events are geared to ages 14 and up.

WOMEN'S MINISTRY (con't)

Together we worship, learn and laugh a lot. Each time we meet, we give back to the community with a special project focus. When the Girl Thing mannequins come out all dressed up, you'll know an event is coming up.

For all inquiries, please contact:

Elaine Rogers

618.277.0232

erogers@faithfamilyshiloh.org

Children's Ministry | Kidz Town

Your kids are welcome in Kidz Town! All classrooms and activities take place in our very own custom-designed town. We offer creative and fun experiences for children in every age group.

FIRST TIME AT KIDZ TOWN

When you arrive, a team member will be ready to direct you to your child's age-specific program where you can give them a hug, send them on their way and go enjoy the adult service! Just head to our Kidz Town Registration Station where a team member will sign your child in, assign a parent/family ID pick up number and give your child a name badge. Your child's well-being is crucial to us, so keep this ID number close. If we need to contact you during the service, this number is displayed on the screens at the front of the auditorium. You can find more information on our website at: faithfamilyshiloh.org/kidztown.

BABY COVE | Birth - 12 months

Our workers will provide your infant a calming and caring environment during this precious stage of life.

AQUARIUM | 12 - 24 months

This is the age that little ones begin crawling, walking and discovering! In this classroom we'll accommodate your child's development and begin teaching them about God's love for them.

FAMILY PARK | 2 year olds

Kids have a great time in this room with its own porthole to enter the classroom. They learn songs and have lessons with exciting crafts and activities.

FAMILY PLAYGROUND | 3 year olds

Kids have their own playground right inside their room. They have circle time where they learn Bible lessons, do crafts and activities. Class ends with playtime in the park.

4-K CAFE | 4 year olds - Kindergarten

This amazing '50s café theme is fun for the kids. Bible lessons and craft time are in the café area complete with a soda fountain. Children have plenty of room to jump and dance during their worship time with the Lord.

VICTORY THEATER | Grades 1 - 3

This state-of-the-art room has everything imaginable for a theater classroom, including a large stage and stadium seating. Kids have an amazing time with object lessons and games that really bring God's Word to life. They earn Bible Bucks for bringing their Bibles and for reciting Bible verses. Later they can cash in those bucks for fun prizes.

FUEL | Grades 4 - 5

This vibrant room is just what the older kids like. Incredible lighting and great sound puts it over the top. The praise and worship is awesome and the kids really connect with Jesus. They have a great time learning through object lessons, interactive skits and powerful teaching.

KIDZ TOWN SPECIAL EDITION | 2 - 11 year olds | 11:00a

This is a loving environment for children with special needs, where they are nurtured and taught about God by a dedicated leadership team. To best accommodate your child, please contact us for more information.

AWANA CLUBS | 2 year olds - Grade 8

We've partnered with Awana to develop spiritually strong children and youth who faithfully follow Jesus Christ. Ages 2 - grade 8, learn about God's word through exciting games and scripture memorization while earning awards. Our clubs are Puggles, Cubbies, Sparks, Truth & Training and Trek. The Clubs meet on Sunday evenings at 6:00p August - April.

For all Children's Ministry inquiries, please contact:

Pastor Michael Lincoln

618.277.0232

childrensministry@faithfamilyshiloh.org

Guest Services Ministry

BAPTISM

This team assists with baptism setup, preparation and cleanup. Baptisms are held on the first Sunday of even numbered months.

Cathy Harrawood

618.277.0232

charrawood@faithfamilyshiloh.org

BEREAVEMENT MEAL TEAM

The bereavement meal team is involved in food preparation, serving and cleanup for meals following funeral services at Faith Family Church. This special team offers warm smiles and friendly faces in time of need.

Rick & Yvonne Satterfield

618.719.4678

satterfieldivonne@gmail.com

BOOKSTORE/CAFÉ

This team creates a welcoming atmosphere for guests while they browse various resources for spiritual growth and connect with each other over a cup of coffee or cold beverage. The Bookstore/Cafe is open on Sunday morning before and after each service.

Shirley Mohr
618.541.4954
smohr@faithfamilyshiloh.org

COMMUNION SUPPORT

This team prepares the communion element trays before service and cleans the trays after service on the third Sunday of each month and special occasions.

Monik Patterson
618.606.4032
mlpatt@live.com

COMMUNION SERVERS

This team assists the ushers in serving communion on the third Sunday of each month and special occasions.

Gary Hursey
618.531.1407
gary@telecomdirectusa.com

CONNECTION TEAM

This team provides personal attention to new guests inside the auditorium before and after service, answering questions, and passing out welcome gifts.

Toney Watkins
618.558.6558
mdavis@faithfamilyshiloh.org

GREETERS

This team welcomes guests at the front doors and at the entry of the auditorium as well as distributes bulletins.

Melanie Davis
618.277.0232
mdavis@faithfamilyshiloh.org

MRT | Medical Response Team

This team provides medical assistance as needed. Team members are trained first responders and have experience in their field.

Lesa Cox
618.622.8913
mdavis@faithfamilyshiloh.org

NEW MEMBERS LUNCHEON

This team prepares and serves a light lunch to new members who have completed the Journey Membership Class. The luncheon is held quarterly.

Larry & LeAnn Jones
618.741.6284 or 618.741.7934
mdavis@faithfamilyshiloh.org

PARKING

This team not only provides a safe environment and parking assistance for guests, they also help them experience the love of Christ before they reach the building.

David Brown
618.363.3995
mdavis@faithfamilyshiloh.org

SECURITY

This team provides a secure environment for services and special events by monitoring the building and campus activities, identifying potential issues, and partnering with law enforcement. Team members are selected through an interview process.

Gary Hursey
618.531.1407
gary@telecomdirectusa.com

SWAT TEAM | Servants Who Accomplish Tasks

The SWAT team assists the church office staff with a range of administrative tasks which include preparing supplies for the weekly services (welcome packets, visitor bags, bulletins) and items for various other ministries. This team serves on Thursday mornings from 9:00a to 12:00p.

Yvonne Satterfield
618.719.4678
helps@faithfamilyshiloh.org

Kim Douglas
618.277.0232
kdouglas@faithfamilyshiloh.org

USHERS

This team assists in seating guests, collecting offerings, serving communion, and carrying out other responsibilities that ensure the service flows in an efficient manner.

Gary Hursey
618.531.1407
gary@telecomdirectusa.com

Stuart Brethauer
618.560.6474
brethauer@aol.com

VISITOR HOSTS

This team personally welcomes and orients new guests to our church, which includes tours of the facility and assisting families with kids to find their appropriate rooms.

Melanie Davis
618.277.0232
mdavis@faithfamilyshiloh.org

Media Ministry

CAMERAS

The camera team brings the practical value of image magnification as well as artistry to enhance the worship experience. People of all ages excel in this position. A steady, smooth hand and an artistic eye are helpful.

LIGHTING

The lighting team serves with design to support praise and worship, dramas and sermons. We view lighting as an enhancement to the worship experience and desire to bring the best possible artistic and non-distracting presentation. A person with an artistic eye will enjoy this ministry.

PROJECTION

The projection team serves the vocal team, choir, and pastors with lyrics, announcements and sermon support. This important position requires an individual who will learn the songs, can easily read and follow written instructions and stay focused under pressure. A degree of technical efficiency is helpful.

SERVICE EDITOR

The service editor serves Sunday afternoon after the second service. Service editors preview the Sunday service recordings and edit as needed in preparation for uploading to Vimeo.

STAGE MANAGERS

This team supports the Worship Team during services and rehearsals. This position does not require any special sound training as it is a serving position to provide the band and vocal team with what they need to lead the congregation into praise and worship. If you can understand a graph, take direction, think and act quickly, you can support this ministry. Experience in the field of IT is useful.

STAGE SET TEAM

The stage set team maintains and changes the stage sets weekly. Evening and weekend availability are necessary as there are many events happening on stage each week. A strong back and an eye for symmetry are needed.

SWITCHING

The switching team serves the congregation by merging the input from multiple cameras followed by artistically and smoothly transmitting that to the congregation. Multi-tasking ability is a must and the ability to function under pressure. The switcher is a director and an editor under live conditions. Experience is not necessary.

For all Media Ministry inquiries, please contact:

Nancy Blecha

618.277.0232

nblecha@faithfamilyshiloh.org

YOUTH MEDIA SUPPORT | Activ8 & Elev8

This team consists of individuals that handle the media needs for the youth ministry. The team serves in sound, lighting, and projection for youth services and special events. All positions can be filled on a weekly basis or just once a month. Training will be provided on all positions and the systems are extremely user friendly. Age requirements for Activ8 are Grade 11 or age 16; for Elev8 you must be age 20.

For Youth Support Media Ministry inquiries, please contact:

Meghan Hill

618.277.0232

youthministry@faithfamilyshiloh.org

Military Ministry | Operation Honor

It is our mission to honor, serve and reach the active duty, reserve and veteran military families in our community. We have initiatives that target every area of military life through various events and small groups held throughout the year. In addition, we strive to provide support, prayer, and fellowship to facilitate connections with deployed service members and their families through regular contact, care packages or letters, as requested by members and/or their families. Operation Honor volunteers also help facilitate church-wide military-focused events. Thank you for your service.

For all Operation Honor inquiries, please contact:

Cathy Harrawood

618.277.0232

operationhonor@faithfamilyshiloh.org

Outreach Ministries

All people matter. It's not just something we say, it's something we live. We're passionate about serving the people in our community and around the world. That means going out to those who may not be able to come to us!

FFC MISSIONS GROUP

A mission focus is part of the Great Commission "to go and preach the Gospel." Our team supports individuals who are doing just that. Join us at 10:45a on the third Sunday of each month to talk and pray for missionaries whom FFC supports. We also provide an opportunity to meet with our missionaries when they're in town.

Franz & Fran Karnuth
618.719.6182
fkarnuth@hotmail.com

JEWEL BOX MINISTRY

For the past several years, a ministry team of women have gone into the local strip clubs to bring hope to the women there. They do this by praying with the girls, cooking and serving home-cooked meals and forming a community around them to show the love of Jesus. Opportunities to serve in this ministry include cooking meals, praying in the parking lots and sharing valuable public resources to improve their lives. This is a daytime ministry for women only.

Elaine Rogers
618.277.0232
ffc@faithfamilyshiloh.org

SONSHINE MINISTRY | A Ministry to the Elderly

There's something to be said about honoring our elders. Each Sunday our teams do just that by bringing the love of God through praise & worship, teaching, and prayer to seven different convalescent homes. Spending the morning with these amazing men and women is a privilege.

Sarah McGuire
618.277.0232
smcguire@faithfamilyshiloh.org

STREETLIGHTS | Urban Ministry

We serve our friends in the John Robinson, John DeShields and Orr-Weathers housing complexes in East St. Louis through three outreach ministries: **Sidewalk Sunday School, Food Ministry and Adopt A Block**. Volunteers for the various Streetlights ministries will go through training, complete a background check and purchase a Streetlights T-shirt. Children under 16 years can serve alongside their parents.

Sidewalk Sunday School - Saturdays during the summer we set up an interactive children's program for the kids in John DeShields and Orr-Weathers. This ministry is a one-hour, high energy kids program with games, songs, exciting Bible teaching, and prizes.

Food Ministry | Include Some Food for Another Dude - This ministry helps to feed the hungry by packaging and delivering non-perishable food items to the East St. Louis families living in John Robinson, John DeShields and Orr-Weathers. Volunteers meet at FFC at 9:00a on the third Saturday of the month to package food prior to delivery.

Adopt A Block - Adopt A Block is our year-round outreach with one goal: connection. Two Saturdays a month we visit the residents to bring hope and build lasting friendships.

Sarah McGuire
618.277.0232
streetlights@faithfamilyshiloh.org

Prayer Ministry

BETWEEN SERVICE PRAYER

We invite you to join a group that prays between services from 10:30 - 10:55a in Classroom A on Sundays. The focus of the prayers is different each week but centers around our church, country and family. We desire to see more people praying; people praying more.

EMERGENCY PRAYER LINE SUPPORT

This ministry serves the congregation by praying for requests that come in through the church prayer line. This has proven to be very beneficial for those in need in our church. Volunteers would need to check their email regularly for incoming prayer requests.

Elaine Rogers
618.277.0232
ffc@faithfamilyshiloh.org

Worship Arts Ministry

This is a passionate community of musicians with a common interest in worshiping our Savior. Our skilled band members and vocalists practice together during the week, working hard to craft each weekend's worship experience.

BAND

If you play drums, bass, guitar, or keyboard and would love to be a part of a band that is passionate about worshiping God with your instrument, we would love to hear from you. The band rehearses on Wednesday evenings as scheduled and serves on the platform on a rotating basis.

PRAISE CHOIR

If you love to sing and worship, you will find a great place of community in Praise Choir. They serve every fourth Sunday in both services. Rehearsals are 6:30 - 8:30p every third Wednesday.

VOCAL REHEARSAL PIANIST

Be a part of preparing for our Sunday morning services by supporting our Praise Choir vocal rehearsals, which are once a month on Wednesday evenings. Rehearsal pianists serve on a rotating basis.

Daniel Tsubota
618.277.0232
dtsubota@faithfamilyshiloh.org

Young Adult Ministry

P121 | Community for 20s-30s

Philippians 1:21 says, *For to me, to live is Christ, to die is gain*. Great! But what does that mean? And what does it look like in our everyday lives? Our stories are all so different, but in many ways, our answers to these questions are the same. Together we will find those answers. P121 meets every Wednesday in the Zone at 6:30p. Like us on Facebook to stay informed on P121 upcoming events.

Pastor Paul Fernandes
618.277.0232
pfernandes@faithfamilyshiloh.org

Youth Ministry

We exist to anchor and equip young people to live the life God created them to live. We aim to accomplish this through passionate worship, epic messages, a thriving community, and discipleship.

ACTIV8 | Grades 6 - 8

Activ8 meets Sundays at 9:00a in the Zone Youth Center where they encounter God in a new and fresh way. We partner with parents in sparking passion and devotion for the Lord through practical and fun teachings, and addressing the unique issues that middle school students encounter.

ELEV8 | Grades 9 - 12

Elev8 meets Thursday nights at 7:00p in the Zone Youth Center. Real, raw, and relevant is what high school students experience when they come to Elev8. God's Word is unpacked in a practical way that they can understand and apply to their lives. Whether through artistic skits, live worship, or spoken word, an atmosphere is created where students can grow in their knowledge of God and their personal relationship with him.

For all Youth Ministry inquiries, please contact:
Pastor Paul Fernandes
618.277.0232
youthministry@faithfamilyshiloh.org

Small Groups.

Overview

Our Motive: To promote healthy relationships that empower people to reach, serve and grow.

Our Method: Our groups operate under a free-market philosophy that gives qualified leaders the freedom to develop groups based on the leader's interest, talents or needs. Leaders receive ongoing training, support and encouragement through a relational leadership structure. When, where and how often a group meets is initially determined by the leader and members are free to attend whatever group suits their interests.

Groups meet on a trimester schedule with the current trimester ending in August. We will follow with a 2017 Fall Trimester (September - December) and Spring Trimester (March - May). Each trimester will provide an opportunity for new leaders and new groups to start. Members may choose a new group each trimester or recommit to a previously attended group.

Our Means: You! We believe God has called each of you to have a part in influencing others toward Christ. We believe there are divine connections, Holy Spirit inspired ideas and powerful ministry opportunities within each of you that can change our entire community. If you can facilitate a group that brings spiritually formative relationships, then you are a potential small group leader. Please prayerfully consider this opportunity.

Thinking about being a small group leader?

If you are considering small group leadership, please register for the next orientation session. ***Please note: As a prerequisite to attending the Small Group Leader Orientation, you must have completed or be committed to completing the Faith Family Church membership process. Our upcoming orientation classes are listed below.***

Sunday | 08/13 | 11:00a – 12:30p | Room 203

Sunday | 11/12 | 11:00a – 12:30p | Room 203

Pastor Melissa Gerke

618.277.0232

smallgroups@faithfamilyshiloh.org

FAQs

What is a small group?

A small group is a group of three or more persons meeting for a set period of time with the objective of meeting a felt need or sharing a common interest.

Why should I join a small group?

We are designed by God to live life in relationship with others. Positive life change happens best when we are surrounded by Christian friends who support, encourage and challenge us.

How do I join a small group?

Contact the leader for more information. If no registration is required, just show up at the time and place mentioned.

Who can join a small group; can I join a small group even if I'm not a regular attendee of FFC?

Absolutely. Anyone can join a small group, even if you are not a regular attendee of FFC. We'd love that!

Do I have to take any classes before I can join a small group?

None at all. You can jump right into almost any group.

Do I have to join a small group to be a part of FFC?

No, but small groups provide a great place for you to develop meaningful friendships as well as providing a way for a large church to be a community.

Can I join more than one small group?

Yes, but we believe you will have the best experience if you are committed to only one or two.

Can I switch to a different small group?

Yes, most small groups are open for you to join at any time. Simply contact the leader and let them know you are interested and then check it out. We also have a Connection Fair three times each year (Spring, Summer and Fall). The Connection Fair is an entry point for new leaders and an opportunity for groups to launch new curriculums.

How often do small groups meet?

Each small group is different. Some meet weekly, some bi-weekly and some meet once a month. You can choose a group that best fits your schedule.

Is every small group a Bible study?

No, there are all kinds of groups: activity groups, special interest, Bible studies, outreach teams, sports teams, or just about anything that may interest you.

Who should I contact if I have a question about a specific group?

Please call or email the group leader directly. Their contact information is listed with their group information.

Is childcare available for my group?

Each small group is different and we attempt to accommodate the needs of all participants. Please contact the group leader directly for more information.

Are minors allowed to attend small groups?

Minors are only allowed to attend if accompanied by a parent or guardian and at the discretion of the group leader unless otherwise specified.

Activity & Special Interest Small Groups

ATHLETIC TEAMS

Athletic teams provide an avenue for fun and friendship in a competitive sports setting. League play includes competing with other churches and teams within the local community. Contact leaders for seasonal registration.

Requirements: Entry fees vary by sport

BASKETBALL | Men's Competitive Winter League

Lamont Haynes

618.365.1980

lamont.haynes@wfadvisors.com

SOFTBALL | Men's Competitive & Recreational Ages 18 & up

Cathy Harrawood

618.277.0232

charrawood@faithfamilyshiloh.org

DO HARD THINGS RUNNING GROUP

Our group meets on Saturday mornings to train for something hard, such as a triathlon, full or half marathon, or just to be more healthy. Whatever the physical goal might be, our ultimate goal is to love and honor our Savior, Jesus Christ, by learning to seize the day through dedication and commitment of accomplishing a goal that might seem beyond our capability.

Steve Dowling

618.304.4772

sdowling08@yahoo.com

Saturday | 7:00a | Begins 06/17

O'Fallon Sports Complex, 301 Obernuefemann Road

Requirements: Good running shoes, water and great attitude; if under age 18, must be accompanied by a parent

GETTING HEALTHY WITH THE EDEN DIET PLAN

It's been called the biblical anti-dieting plan for weight loss. If you're tired of the yo-yo diet syndrome and would like to get healthy once and for all, then this is the group for you. Based on the book *The Eden Diet* by Rita M. Hancock, we'll learn about a different way to view food, hunger and dieting. Together we will learn how God designed us to eat and that no food is off limits! Yes, you can eat treats, enjoy food and lose weight.

Katey Chu

618.304.0067

kdchu92@gmail.com

Every other Saturday | 10:00a | Begins 06/24 | Room 212

Requirements: Age 18 and older; purchase the book and workbook *The Eden Diet* by Rita M. Hancock

IRON DISCIPLES | Motorcycle Group

This is a group for people who love Jesus and enjoy riding motorcycles. We ride on the 1st Sunday of the month with some Saturday rides as well. Invite your friends and family. It's a great way to shine the light of Jesus to the world with fellow Christian riders.

Tamy Vinyard

618.616.8768

tamy_vinyard@yahoo.com

1st Sunday | 12:30p | On-going | FFC S. East parking lot

Requirements: Ages 16 & up; know how to ride; bring your own motorcycle

IRON SHARP MUSCLE & FITNESS

This fitness group is for any level of physical activity. Develop a healthier way of living and create friendships through workouts and fellowship.

Omar Acosta | Leader Trish Fournie | Co-Leader
618.402.7718 618.972.2791
ptomaracosta@gmail.com fourknee1@charter.net

Saturday | 10:00a | On-going
715 Lake Pointe Center Drive, Suite 115 & 117, O'Fallon

Requirements: Jump rope; light weights; bottled water

LADIES IN THE LOU | Exploring St. Louis

This ladies group explores wonderful landmarks and some of the unique attractions in the greater St. Louis area. We'll meet on a Saturday morning in the church parking lot and carpool to our destination.

Janice Bonapart
719.648.3306
jbonapart@aol.com

Saturday | 10:00a | Dates TBD
Locations vary

Requirements: Women age 18 & up; money for lunch and personal spending

MINISTRY OF MOTHERHOOD | MOMS

Mothers of young children, join us at different area parks this summer for fellowshiping and enjoying God's goodness, while our children play.

Ranae Wood
618.977.2648
rwnchrist@yahoo.com

Tuesday | 9:30a | Begins 06/13
Various area parks | Contact leader for details

Requirements: Bring a sack lunch for you and your child

SINGLES SOARING IN CHRIST

If you are single, with or without children, no matter what your age; you love Jesus, food, fellowship and fun group activities, then this is the group for you. Join us for monthly dinners, picnics, float trips, camping, hiking, lunches, as well as service projects. Children are welcome.

Rick Bevers | Leader Theresa Beamon | Co-Leader
618.920.2105 618.628.2446
ffcsingles@gmail.com beamon_21@yahoo.com

2nd Friday | 6:00p | Begins 07/14 | East Café

Requirements: Singles; a dish for potluck meals; fees for some off-campus activities

WALK THE WALK | Ladies Walking Group

Join us for 30 minutes of walking either outside in the church parking lot, or inside the church if the weather is bad. Afterwards we meet for a short devotional and discuss our Life Journals. Any journal is acceptable.

Linda Fishback
618.531.5901
lmfishback@yahoo.com

Wednesday | 6:15p | Begins 06/28 | Room 201

Requirements: Women only; walking shoes; water bottle; Bible; journal

VIPs | Ages 40 & Up

This fellowship group enjoys dinners, recreational activities, special events, and an annual trip that includes a spiritual and educational focus. This is a great opportunity for you to strengthen friendships and build new ones as we bring out the youthfulness and fun in everyone!

Kent & Debbie Ohlendorf
618.709.2917 or 618.709.2921
kohlendorf@charter.net or dohlendorf@charter.net

VIPs | Ages 40 & Up (con't)

Friday | 6:00p | Various Dates | East Café

Dates: 06/30; 07/28; 08/25; 09/29; 10/27; 11/17; & 12/15

Requirements: Adults 40 & up; a dish for potluck dinners; fees for some off-campus activities

Discussion Groups

ACCOUNTABILITY TO BE AWESOME

Do you have a list of goals that keep being put off due to words like *can't, shouldn't, won't, difficult, failure, or impossible*? Have you struggled to meet goals due to lack of motivation or accountability? Now is the time to take that big jump into the glorious life God has in store for you. We will create our own personal set of goals and steps to achieving them in a timeline that works for each of us. Let's grow together and watch our progress as God blesses us in different ways.

Hannah Tolan

618.779.7257

hltolan@gmail.com

Tuesday | 7:00p | Begins 06/20

216 Erin Lee Street, Apt 2B, O'Fallon

Requirements: Single women age 23 and up

FAITH FRIENDS

We take a fresh approach to faith in God by using the Bible and looking to God to reveal himself as Father, Son & Holy Spirit. There are three sessions which are titled: Father God & Me; Jesus & Me; The Holy Spirit & Me. This is not a difficult in-depth study. We'll just be using the Word of God to direct us to faith in Him.

Walt & Sue Yeoman

618.225.0525 & 618.726.7724

ws1958@sbcglobal.net

FAITH FRIENDS (con't)

Monday | 7:00p | Various Dates | East Café

Dates: 06/12; 06/26; & 07/10

Requirements: Bible; pen

FUNDAMENTALS OF THE CHRISTIAN FAITH

Part 1

1 Peter 3:15 says that we should always be prepared to give an answer to everyone who asks us to give a reason for the hope that we have. Upon completion of this study group, you will be able to do just that. You will also be able to answer questions such as: Why were animals sacrificed? Is the Bible really God's Word? Where did the devil come from? Plus numerous other questions will be answered. Without a doubt, you will learn something new every time we meet.

Paul Clawson

618.363.5893

paul@allthewiser.com

Monday | 7:00p | Begins 06/12 | Room 206

Requirements: Bible

FUNDAMENTALS OF THE CHRISTIAN FAITH

Part 2

This study group covers more topics on some of the subjects that were learned in *Part 1*. You'll learn even more about God, Jesus, and the Holy Spirit. We'll cover topics such as God's will and timing; the miracles and parables of Jesus; faith; action; marriage; money; spiritual warfare; and who you are in Jesus Christ.

Paul Clawson

618.363.5893

paul@allthewiser.com

Tuesday | 7:00p | Begins 06/13 | Room 206

Requirements: Bible; completed Part 1

HEALING THE WOUNDED HEART

This ladies group is based on the book *Healing the Wounded Heart: The Heartache of Sexual Abuse & the Hope of Transformation* by Dan Allender with Traci Mullins. From a Christian perspective and with great compassion, Dan Allender offers hope for victims of sexual abuse. He exposes the raw wounds that are left behind and clears the path toward wholeness and healing through the power of Jesus Christ.

Tammy Lewin
618.514.2541
tammy.lewin29@gmail.com

Wednesday | 6:30p | Begins 06/14 | Room 212

Requirements: Women age 18 & up; purchase the book *Healing the Wounded Heart: The Heartache of Sexual Abuse & the Hope of Transformation* by Dan B. Allendar with Traci Mullins; workbook will be provided

KEEP YOUR LOVE ON | KYLO

KYLO is a movement to establish healthy, thriving relationships marked by a loving connection, respectful communication, and well-defined boundaries. We will watch the DVD lessons from Danny Silk based on his book *Keep Your Love On*, and then discuss.

Scott & Ranae Wood
618.977.2648
rwnchrist@yahoo.com

Friday | 7:00p | Begins 06/23
1005 Coneflower, O'Fallon

Requirements: Married couples only

P121 | Community for 20s-30s

Our stories are all so different, but in many ways, our answers to questions about life are the same. Together we will find those answers through different studies.

P121 | Community for 20s-30s (con't)

Chris Cox
618.402.7773
coxchris112@gmail.com

Wednesday | 6:30p | Ongoing | Zone

Requirements: Ages 18 to 30-something

SEARCH FOR SIGNIFICANCE

This DVD-based study by Robert McGee will help us learn how deeply we are loved, forgiven, pleasing, accepted, and complete in Christ, plus how to apply His truth to everyday life.

Ranae Wood
618.977.2648
rwnchrist@yahoo.com

Sunday | 9:00a | Begins 06/25 | Room 205

Requirements: Purchase the book/workbook *Search for Significance* by Robert McGee at the first class for \$10

TREASURED VESSELS

This group focuses on who we are in Jesus Christ. We will develop a greater understanding of how to be deeper and quieter in meditation in the presence of God. Also how powerful and important your words and thoughts are in creating your world. Watch your image change as we look into the Word of God.

Wanda Harding
618.344.3091 (preferred method of contact)
kwhar@att.net

Friday | 9:00a | Ongoing
409 Merrell, Collinsville

Requirements: Bible; notebook; pen

Life Coaching Groups

DIVORCE CARE

This DVD series includes discussion and support to help you discover hope for the future and experience God's healing. Group members may start at any time; however, we highly encourage everyone to commit to attend the entire series in order to fully benefit from the group.

Bonnie Webb
618.531.9542
yvonne.webb@sbcglobal.net

Tuesday | 6:30p | Ongoing | Classroom A

Requirements: Workbook can be purchased in class for \$16

GRIEF SHARE

This group helps people who are grieving the loss of a loved one to focus on their relationship with the Lord through the healing process. There is a video presentation by professionals plus ordinary people who have been through the grieving process. We will share practical ways to deal with the painful situations that arise during that difficult time.

Margie Murphy 618.741.6421 margiemurphy@att.net	Tina Sieferman 815.275.3260 tc4man@gmail.com
---	--

Wednesday | 7:00p | Begins 07/05 | Room 205

Requirements: Workbook can be purchased in class for \$16

HARMLESS

This group is for women who have or are currently struggling with self-harm. We encourage one another as well as learn tools for recovery from self-harm and healthy coping skills.

Dawn Koester
618.610.5514
dawnkoester543@yahoo.com

2nd & 4th Sunday | 11:00a | Ongoing | Room 201

Requirements: Women only; parental permission required for young women under 16 years of age

LIFE RECOVERY BELIEVERS GROUP & AA Addictions & Co-Dependency

This is a recovery group for people with addictions of any kind, plus a support group for their families, combined with an AA/Alanon meeting. We will learn God's truth and desires for each one of us to live in freedom and serve one another.

Karen Westbrook
618.670.7503
karen.westbrook@yahoo.com

Tuesday | 7:00p | Ongoing | Room 213

Requirements: Ages 16 & up; a desire to stop your addiction

MEN OF PURITY

The world is flooded with images that make it challenging for men to stay free from sexual temptation. Our purpose is to provide men with fellowship and equip them with tools to help maintain sexual purity. We will read through the book *Proven Men: A Proven Path to Sexual Integrity* by Joel Hesch to guide our discussion.

Brent Hemrich
618.751.1091
bhemrich@gmail.com

Monday | 6:30p | Begins 06/19 | Room 201

Requirements: Men only; purchase the book *Proven Men: A Proven Path to Sexual Integrity* by Joel Hesch

Prayer Groups

FFC MISSIONS GROUP

A mission focus is part of the Great Commission “to go and preach the Gospel.” FFC supports individuals who are doing just that. The group meets to talk and pray for the missionaries our church supports. We also provide an opportunity to meet with our missionaries when they are in town.

Franz & Fran Karnuth
618.719.6182
fkarnuth@hotmail.com

3rd Sunday | 10:45a | Ongoing | Room 212 or 210

Requirements: None

HOSTING THE PRESENCE

Are you hungry for an encounter with Jesus? Want to make a difference in the world? In this eight-week DVD study based on best-selling author Bill Johnson’s book *Hosting the Presence*, discover what it means to welcome God’s indwelling, respond to the Holy Spirit, and unleash God’s love. Prepare to encounter God like never before and transform the world around you by hosting His presence!

Thomas Warwick
314.313.8451
thomasjonathonjackson@gmail.com

Wednesday | 7:00p | Begins 06/14 | Room 203

Requirements: Bible; notebook; pen

KINGS & PRIESTS

As we close the gap between where we are in life and His presence, we find that His love becomes our love and His hatreds become our hatreds. The axe for working becomes sharpened without even noticing it. If you desire to be in the presence of God and know Him better, then this small group is for you.

John Muchison
618.406.4432
jmuch2007@charter.net

2nd & 4th Monday | 6:30p | Begins 06/12 | Room 203

Requirements: Bible

WOMEN WARRIORS

We will be using the DVD study by Kenneth Copeland, *Seven Steps to Prayer That Bring Results*. Topics include the scriptural basis of prayer; how to apply your faith; how to stop doubt and fear; how to meet the needs of someone else; and more.

Sheri Lang
618.830.1053
slang3360@gmail.com

Tuesday | 7:00p | Begins 06/13
3248 Roan Hill, Belleville

Requirements: Women only; notebook; pen

WORLD WIDE PRAY-ERS

Are you concerned about America? Does God have a plan for America? Join us as we participate in a weekly online prayer gathering with World Wide Pray-ers, led by Billye Brim, live from Prayer Mountain in Branson, Missouri. A wide variety of topics are covered and prayers are in English as well as our spiritual language.

Louise Hinrichs
618.980.1885
louise.hinrichs@charter.net

Wednesday | 12:00p | Ongoing | Room 206

Requirements: None